

Erie County Chemical Dependency Treatment Racial Equity Analysis

[2023]

Alan M. Delmerico, PhD

John Petrocelli, BS

Scott Martin, BS

Institute for Community Health Promotion
Center for Health and Social Research
SUNY Buffalo State University
1300 Elmwood Ave
Buckham Hall A100
Buffalo, NY 14222-1095
Telephone: 878-6137
E-mail: delmeram@buffalostate.edu



CENTER *for* HEALTH
and SOCIAL RESEARCH

INSTITUTE FOR COMMUNITY HEALTH PROMOTION

BUFFALO STATE • The State University of New York

Table of Contents

	Page
Racial Equity Analysis Overview	5
Maps of Treatment Program Coverage with Demographic Characteristics:	
Figure 1.1: CD Program Coverage Gaps in the City of Buffalo by Race/Ethnicity (Within 1 Mile)	8
Figure 1.2: CD Program Coverage Gap in the City of Buffalo by Poverty (Within 1 Mile)	9
Figure 2.2: Outpatient CD Program Coverage Gaps in the City of Buffalo by Race/Ethnicity (Within 1 Mile)	10
Figure 2.2: Outpatient CD Program Coverage Gaps in the City of Buffalo by Poverty (Within 1 Mile)	11
Figure 3.1: Opioid Program Coverage Gaps in the City of Buffalo by Race/Ethnicity (Within 1 Mile)	12
Figure 3.2: Opioid Program Coverage Gaps in the City of Buffalo by Poverty (Within 1 Mile)	13
Figure 4.1: CD Program Coverage Gaps in Erie County Excluding Buffalo by Race/Ethnicity (Within 10 Miles)	14
Figure 4.2: CD Program Coverage Gaps in Erie County Excluding Buffalo by Poverty (Within 10 Miles)	15
Figure 5.1: Outpatient CD Program Coverage Gaps in Erie County Excluding Buffalo by Race/Ethnicity (Within 10 Miles)	16
Figure 5.2: Outpatient CD Program Coverage Gaps in Erie County Excluding Buffalo by Poverty (Within 10 Miles)	17
Figure 6.1: Opioid Program Coverage Gaps in Erie County Excluding Buffalo by Race/Ethnicity (Within 10 Miles)	18
Figure 6.2: Opioid Program Coverage Gaps in Erie County Excluding Buffalo by Poverty (Within 10 Miles)	19
Tables of Demographic Characteristics of Populations With/Without Treatment Coverage:	
Table 1.1: Basic Demographic Profile for Populations in Chemical Dependency Program Coverage (All Types, Within 1 Mile, City of Buffalo Only)	20

Table 1.2: CD Program Coverage (All Types, Within 1 Mile, City of Buffalo Only): Percent of Each Race/Ethnicity Category as a Proportion of the Total Population In Coverage and Not in Coverage	20
Table 1.3: CD Program Coverage (All Types, Within 1 Mile, City of Buffalo Only): Percent of In Coverage and Not in Coverage Groups as a Proportion of the Total Population in Each Race/Ethnicity Category	21
Table 2.1: Basic Demographic Profile for Population in Outpatient Chemical Dependency Program Coverage (Within 1 Mile, City of Buffalo Only)	22
Table 2.2: Outpatient CD Program Coverage (Within 1 Mile, City of Buffalo Only): Percent of Each Race/Ethnicity Category as a Proportion of the Total Population In Coverage and Not in Coverage	22
Table 2.3: Outpatient CD Program Coverage (Within 1 Mile, City of Buffalo Only): Percent of In Coverage and Not in Coverage Groups as a Proportion of the Total Population in Each Race/Ethnicity Category	23
Table 3.1: Basic Demographic Profile for Populations in Opioid Program Coverage (Within 1 Mile, City of Buffalo Only)	24
Table 3.2: Opioid Program Coverage (Within 1 Mile, City of Buffalo Only): Percent of Each Race/Ethnicity Category as a Proportion of the Total Population In Coverage and Not in Coverage	24
Table 3.3: Opioid Program Coverage (Within 1 Mile, City of Buffalo Only): Percent of In Coverage and Not in Coverage Groups as a Proportion of the Total Population in Each Race/Ethnicity Group	25
Table 4.1: Basic Demographic Profile for Population in Chemical Dependency Program Coverage (All Types, Within 10 Miles, Erie County Excluding Buffalo)	26
Table 4.2: CD Program Coverage (All Types, Within 10 Miles, Erie County Excluding Buffalo): Percent of Each Race/Ethnicity Category as a Proportion of the Total Population In Coverage and Not in Coverage	26
Table 4.3: CD Program Coverage (All Types, Within 10 Miles, Erie County Excluding Buffalo): Percent of In Coverage and Not in Coverage Groups as a Proportion of the Total Population in Each Race/Ethnicity Category	27
Table 5.1: Basic Demographic Profile for Population in Outpatient Chemical Dependency Program Coverage (Within 10 Miles, Erie County Excluding Buffalo)	28

Table 5.2: Outpatient CD Program Coverage (Within 10 Miles, Erie County Excluding Buffalo): Percent of Each Race/Ethnicity Category as a Proportion of the Total Population In Coverage and Not in Coverage	28
Table 5.3: Outpatient CD Program Coverage (Within 10 Miles, Erie County Excluding Buffalo): Percent of In Coverage and Not in Coverage Groups as a Proportion of the Total Population in Each Race/Ethnicity Category	29
Table 6.1: Basic Demographic Profile for Populations in Opioid Program Coverage (Within 10 Miles, Erie County Excluding Buffalo)	30
Table 6.2: Opioid Program Coverage (Within 10 Miles, Erie County Excluding Buffalo): Percent of Each Race/Ethnicity Category as a Proportion of the Total Population In Coverage and Not in Coverage	30
Table 6.3: Opioid Program Coverage (Within 10 Miles, Erie County Excluding Buffalo): Percent of In Coverage and Not in Coverage Groups as a Proportion of the Total Population in Each Race/Ethnicity Category	31
Chemical Dependency Racial Equity Analysis Results	32

Race Equity Analysis Overview

The Race Equity Analysis for Chemical Dependency Treatment Services in Erie County assesses the population characteristics of race/ethnicity and poverty within the context of physical access to treatment services for chemical dependency. These analyses are designed to assess the treatment system as a whole and to better understand if, and where, there are gaps in the coverage of these services, and to then evaluate for potential equity issues in their distribution. This analysis uses the locations of treatment services and examines the demographic characteristics of the populations that fall inside of and outside of their physical catchment areas. A catchment area is defined as the area from which a location, such as a service or institution, attracts a population that uses its services. In the case of this report, we define a catchment area as a 1- or 10-mile radius surrounding a chemical dependency program or service, depending on whether that program is within the City of Buffalo or outside of Buffalo. The analyses of treatment system coverage are conducted separately based on these definitions, with one set of analyses focused on the City of Buffalo only, using the 1-mile radius definition, while the other is focused on Erie County excluding the City of Buffalo, using the 10-mile radius definition.

Program coverage, in this case the catchment areas for physical program locations, was measured using definitions instituted by the U.S. Department of Agriculture Economic Research Service through research on food access in order to define food deserts. These definitions are well suited for use in this analysis to describe deficits in physical access to important physical resources, in this case, treatment service locations. In urban areas, physical accessibility is defined as being within 1 mile; and in rural areas, within 10 miles. These analyses focus on the locations within the county that are outside of these catchment areas which suggest more limited physical accessibility to these resources. Throughout the document, locations that fall within these catchment areas will be described as being “In Coverage” of the physical treatment locations, while locations that fall outside of these catchment areas will be described as being “Not In Coverage” of the physical treatment locations. Maps showing these measures of coverage were derived by creating straight line distance buffers around the geocoded treatment program locations for both Erie County excluding Buffalo and the City of Buffalo only. These locations included programs from neighboring counties if they were within 10 miles of the Erie County border. Please note that these analyses do not reflect the availability of telehealth and remote service delivery which may impact the coverage of some services and have been especially relevant for the system of care throughout the COVID-19 pandemic. Additionally, these analyses represent only the Euclidean (straight-line) distance measures for physical access to the system locations and do not reflect the variable levels of transportation and economic access to these resources for the populations throughout the county.

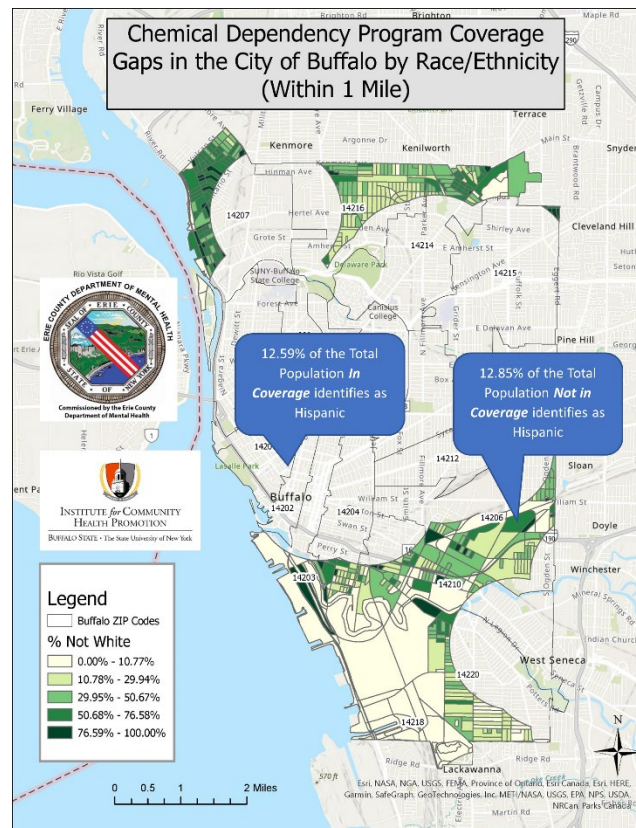
In order to conduct this analysis, first, the distribution of treatment services was evaluated by compiling information about all certified NYS Office of Addiction Services and Supports (OASAS) treatment programs and their locations through the OASAS website¹. Next, circular buffers based on the catchment areas defined above were applied to each location. Maps depicting the race/ethnicity characteristics of locations that did not fall within any treatment catchment area are presented in this report with data at the Census Block level, the smallest enumeration unit available with this

¹ Current as of May 25, 2023

information, using data from the 2020 Decennial Census². Similarly, data on rates of poverty in locations outside of these catchment areas are depicted in maps in this report, however, these data use Census ACS measures³ and are only available at units of analysis larger than Census Blocks, with Census Tracts used here. In addition to the maps, summary tables of demographic characteristics are presented which depict more detailed race/ethnicity characteristics of the aggregated populations inside and outside of the catchment areas.

The demographic characteristics of the populations that are inside and outside of program coverage areas (as defined by the catchment areas) are compared in two ways:

1. Proportions of the *total population* within each of the In Coverage and Not In Coverage groups are presented by each race and ethnicity category, as defined by the US Census
 - a. For example, you might want to know what proportion of the total population within the coverage area of program locations are comprised of a specific population group (e.g. Hispanics) which can then be compared to the proportion of this same population group within the total population of those who are not within the coverage area of program locations. In this example, we might find that the Hispanic population for the In Coverage group represent 12.59% of the total population In Coverage while the Hispanic population for the Not In Coverage group represent 12.85% of the total population Not In Coverage.

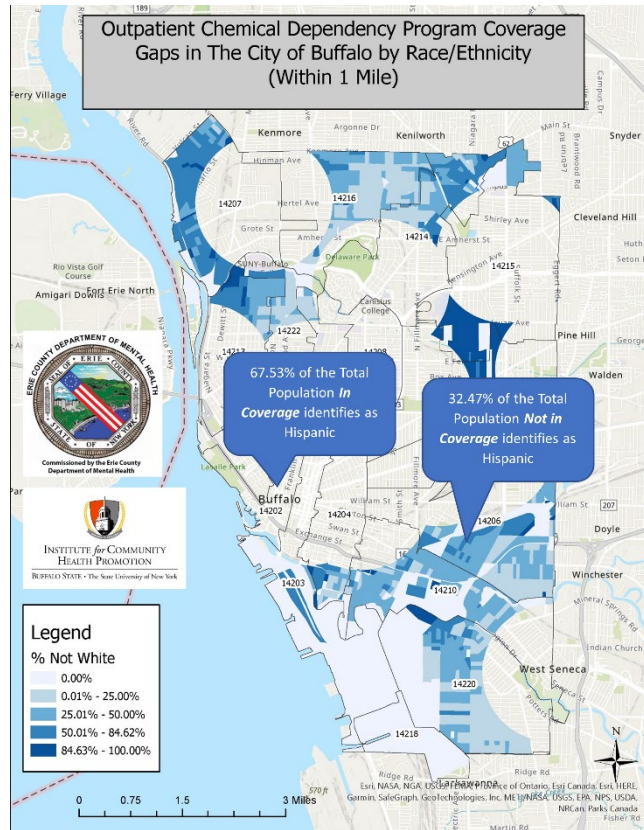


² U.S. Census Bureau, 2020 Census Redistricting Data (Public Law 94-171). Retrieved from <https://data.census.gov/cedsci/table?q=2020&d=DEC%20Redistricting%20Data%20%28PL%2094-171%29>

³ U.S. Census Bureau (2020). *Poverty Status in The Past 12 Months of Families By Family Type By Presence Of Related Children Under 18 Years By Age Of Related Children, 2015-2019 American Community Survey 5-Year Estimates*. Retrieved from <https://data.census.gov/cedsci/table?q=ACS%20B17010&tid=ACSDT5Y2019.B17010>

population group makes up 12.85% of the total population of the Not In Coverage group. The figure below illustrates this example.

2. Proportions of populations *within each race and ethnicity category*, as defined by the US Census, are presented for In Coverage and Not In Coverage groups
 - a. For example, you might want to know what proportion of a population group (e.g. Hispanics) are in within the coverage area of program locations compared to the proportion of this same population group that are not within the coverage area of program locations. In this example, we might find that among the total Hispanic population, 67.47% fall within the In Coverage group while the remaining 32.47% of this population category falls within the Not In Coverage group. The figure below illustrates this example.



Maps of Treatment Program Coverage with Demographic Characteristics

Figure 1.1

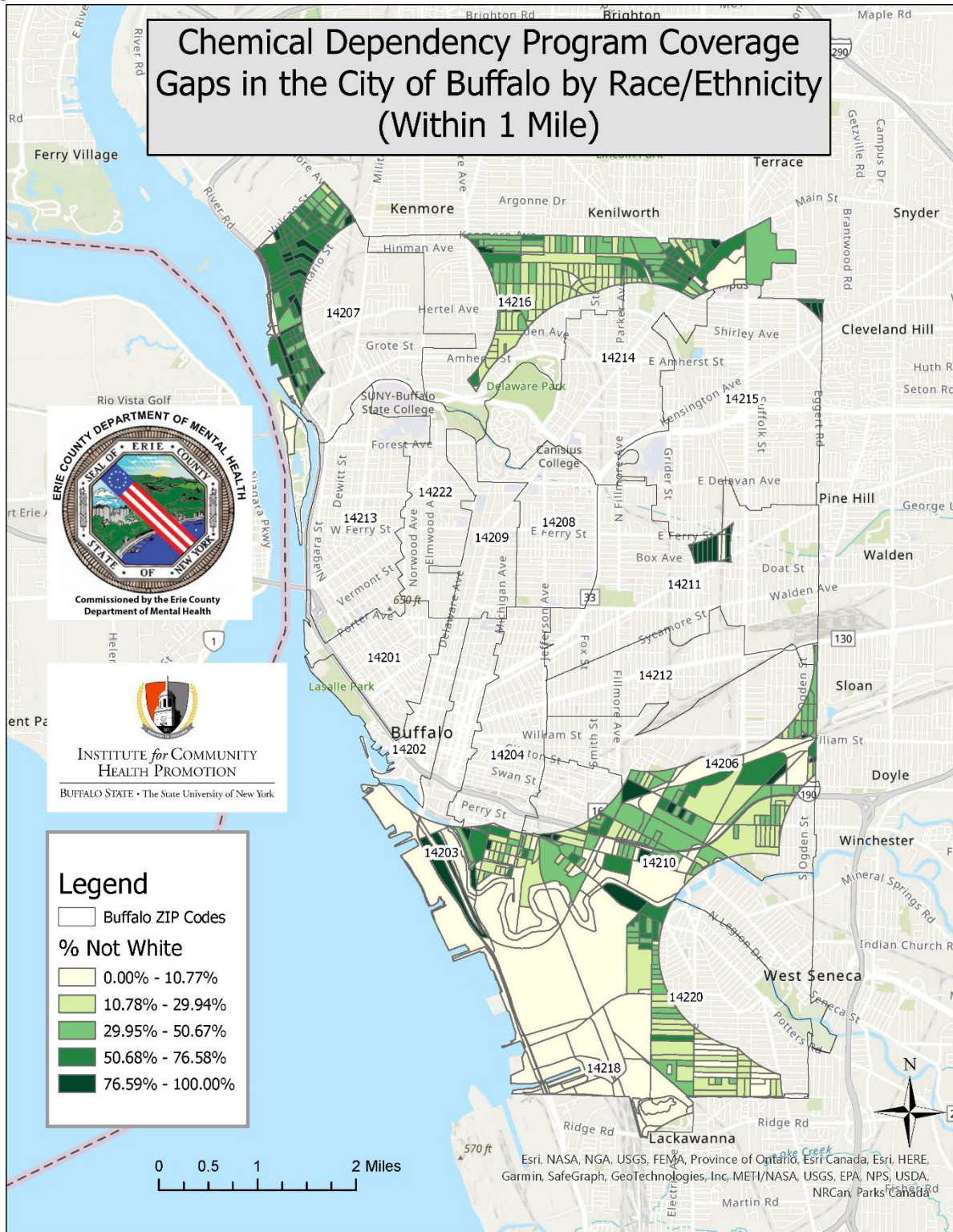


Figure 1.2

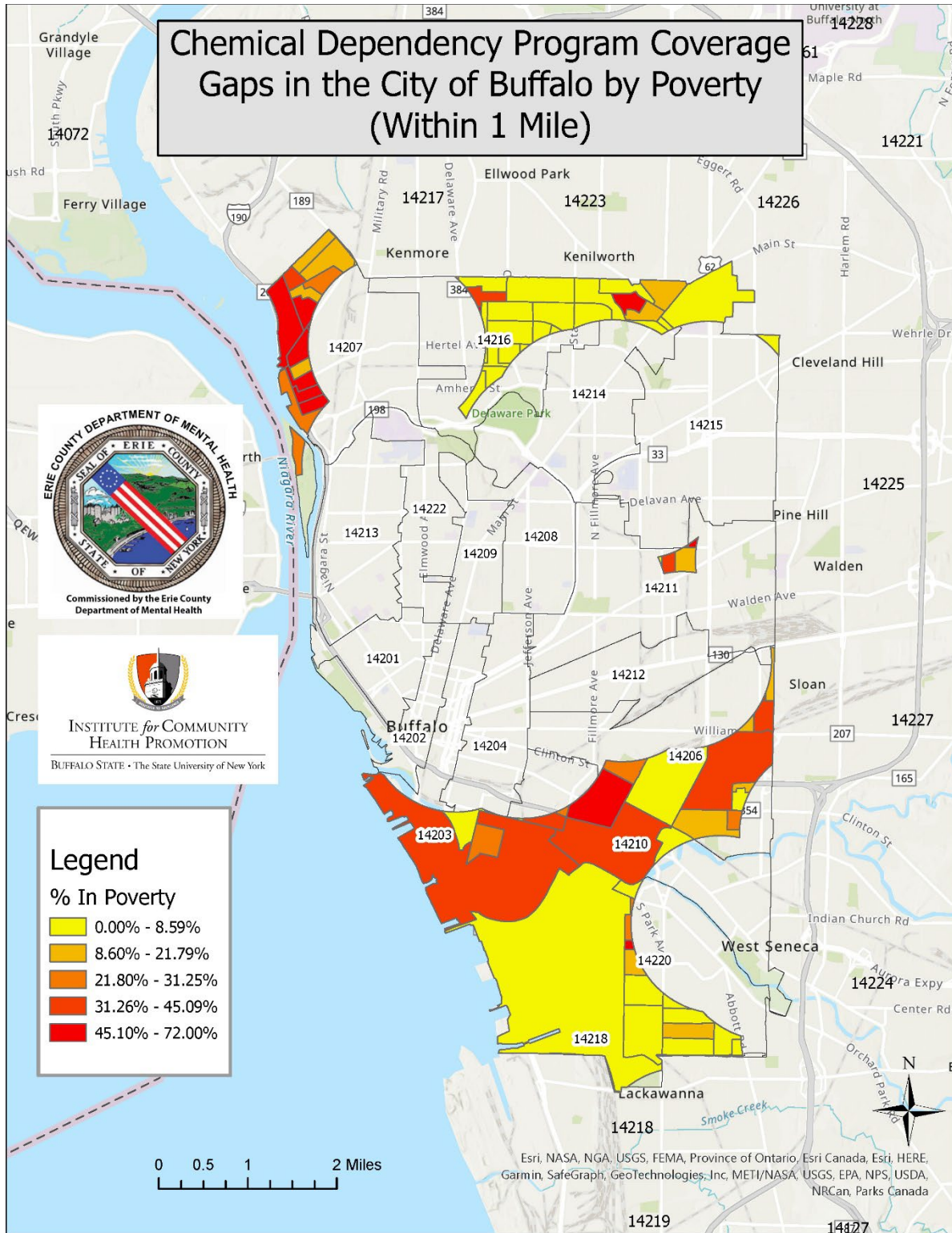


Figure 2.1

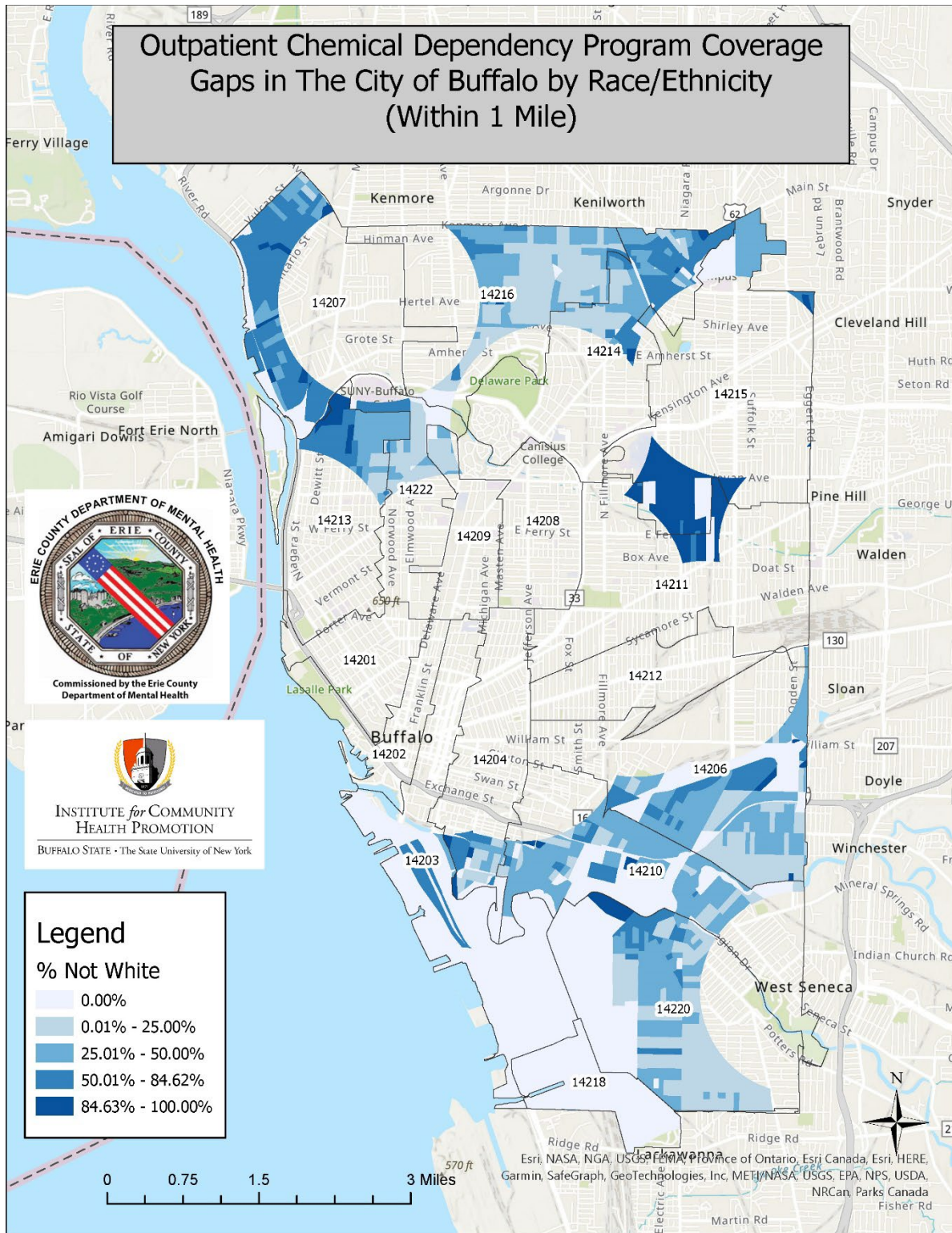


Figure 2.2

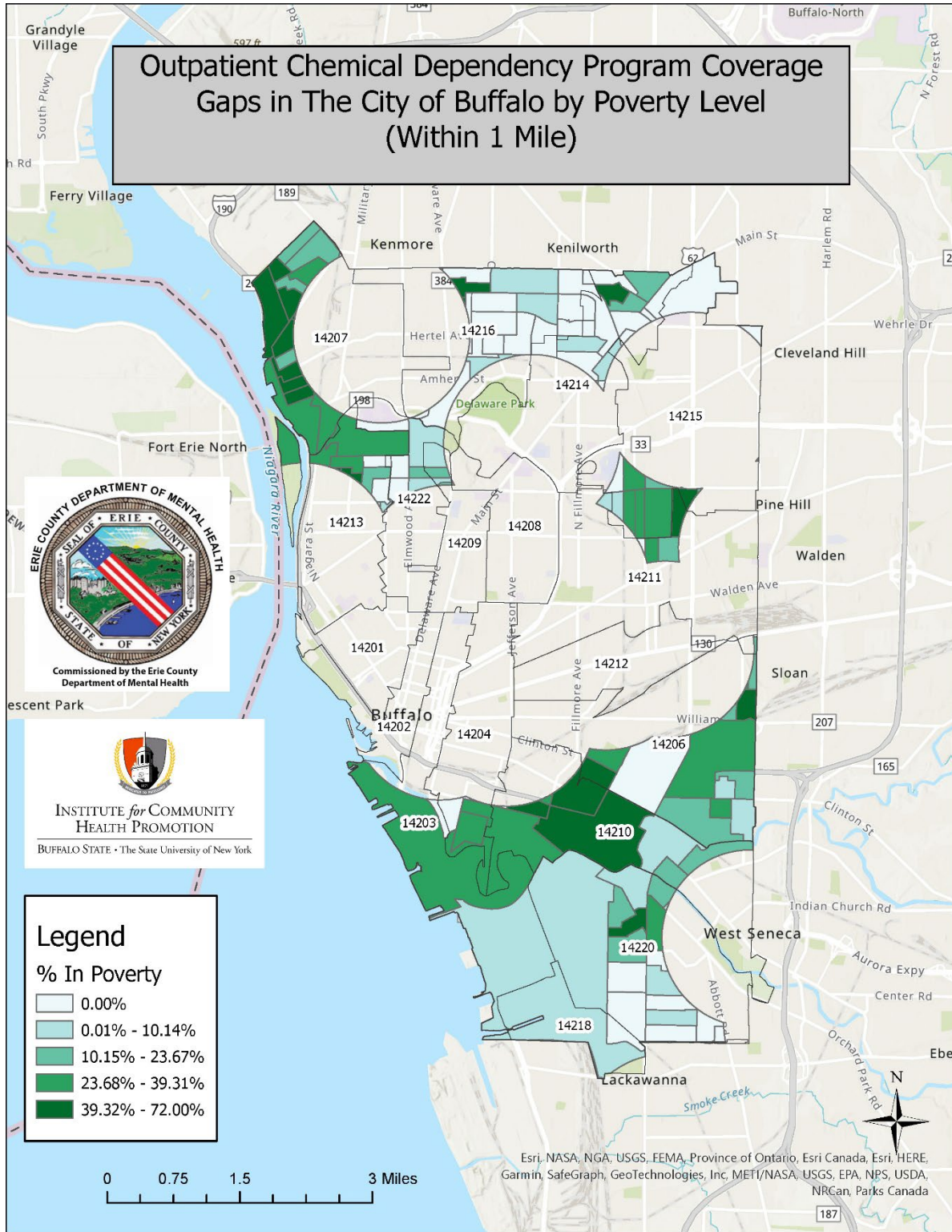


Figure 3.1

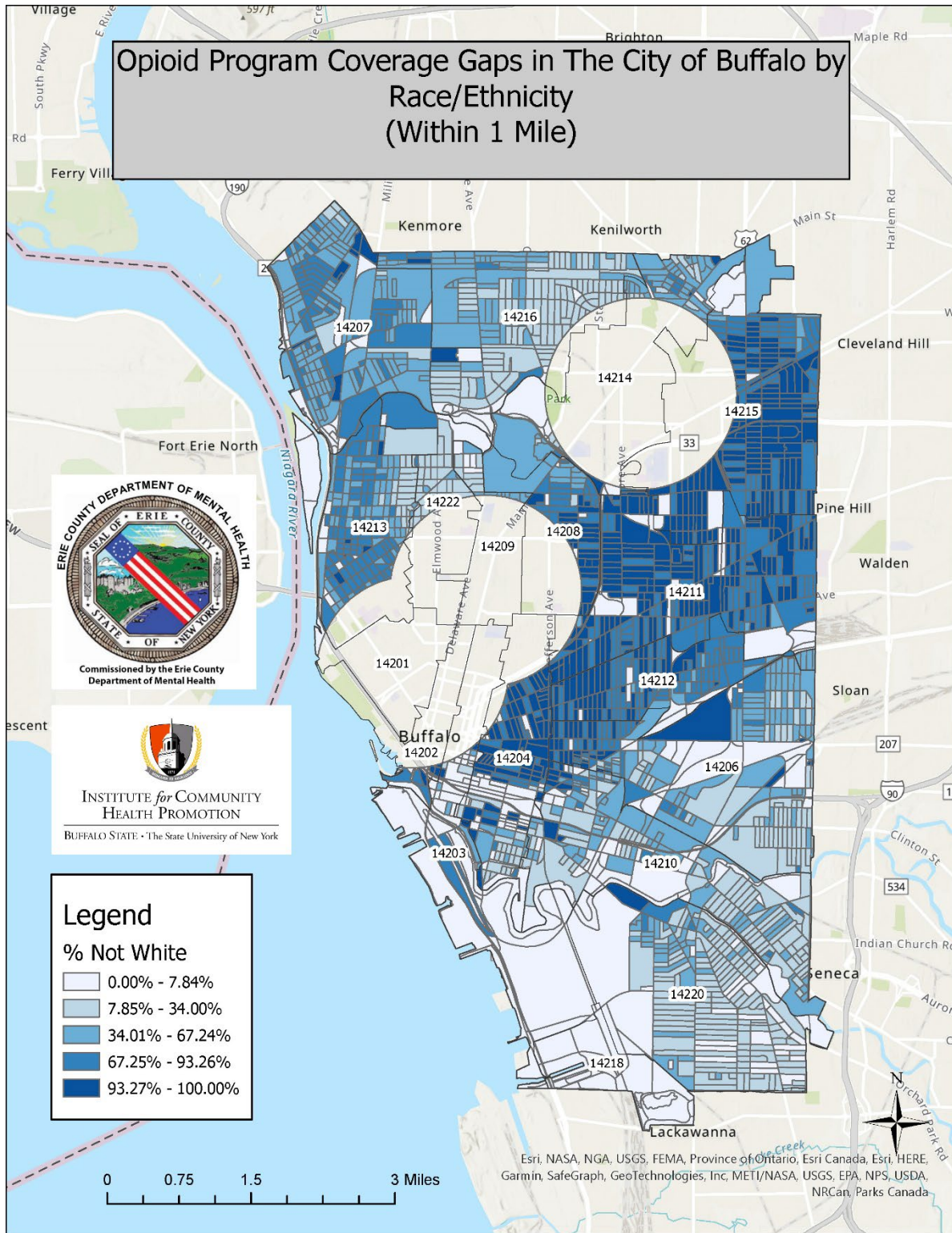


Figure 3.2

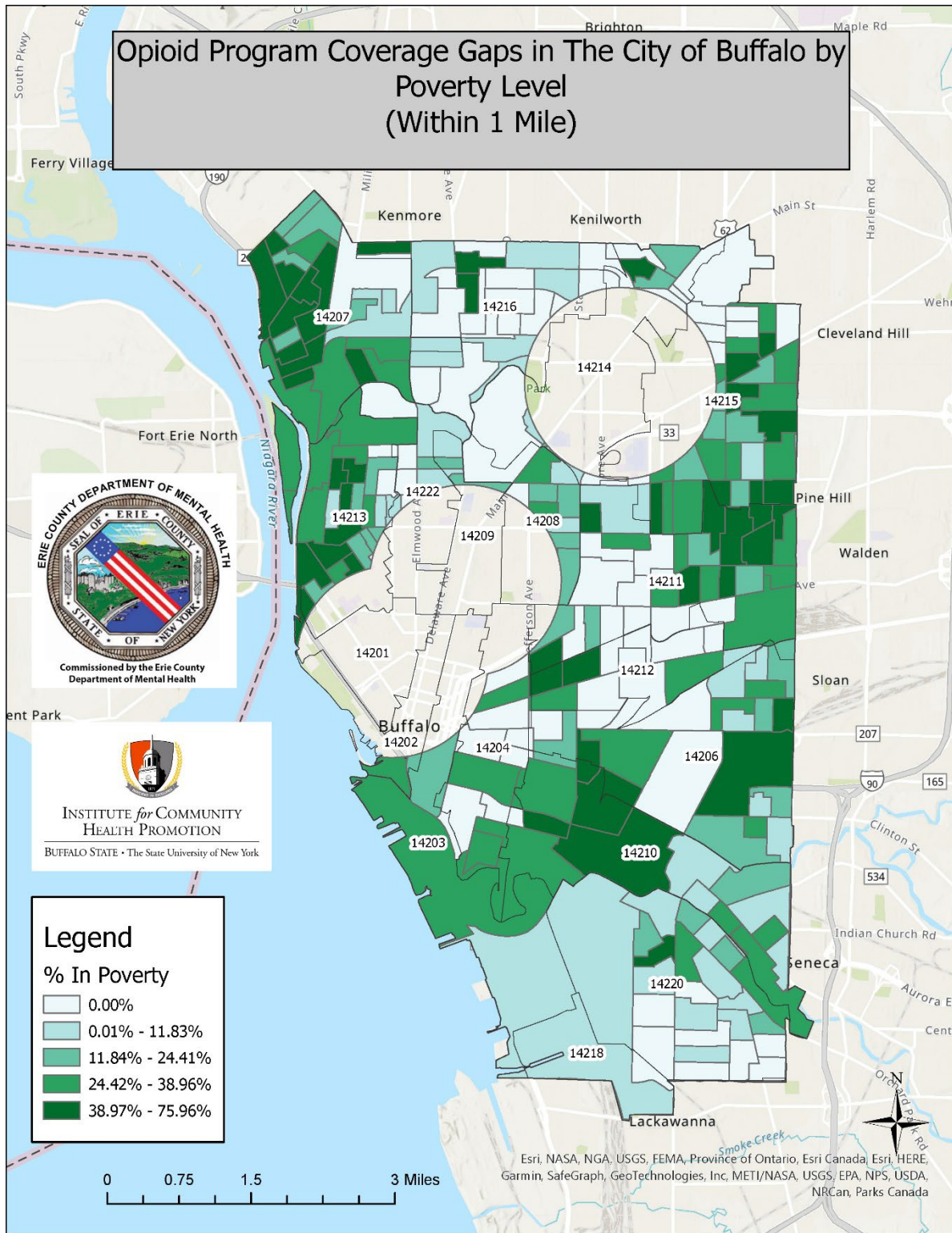


Figure 4.1

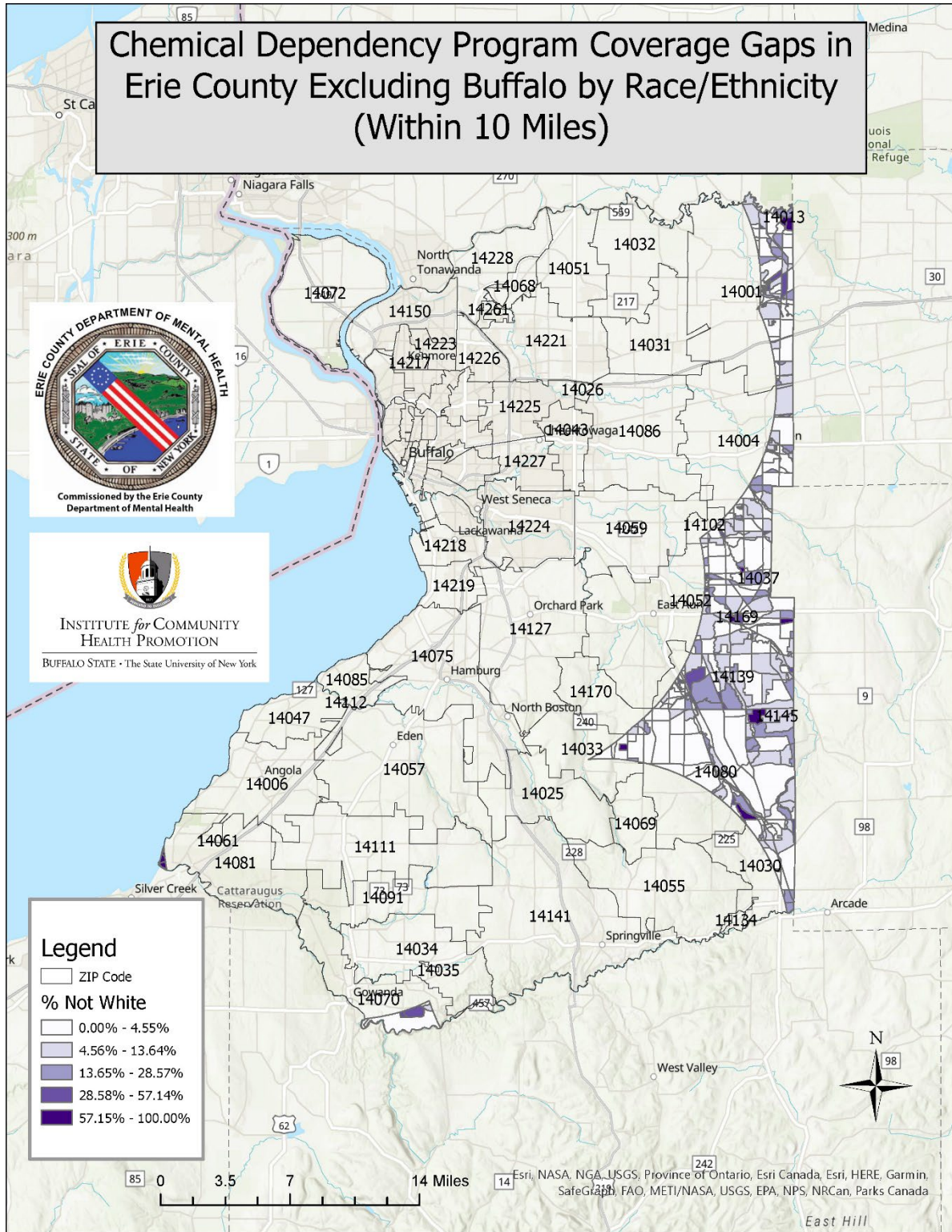


Figure 4.2

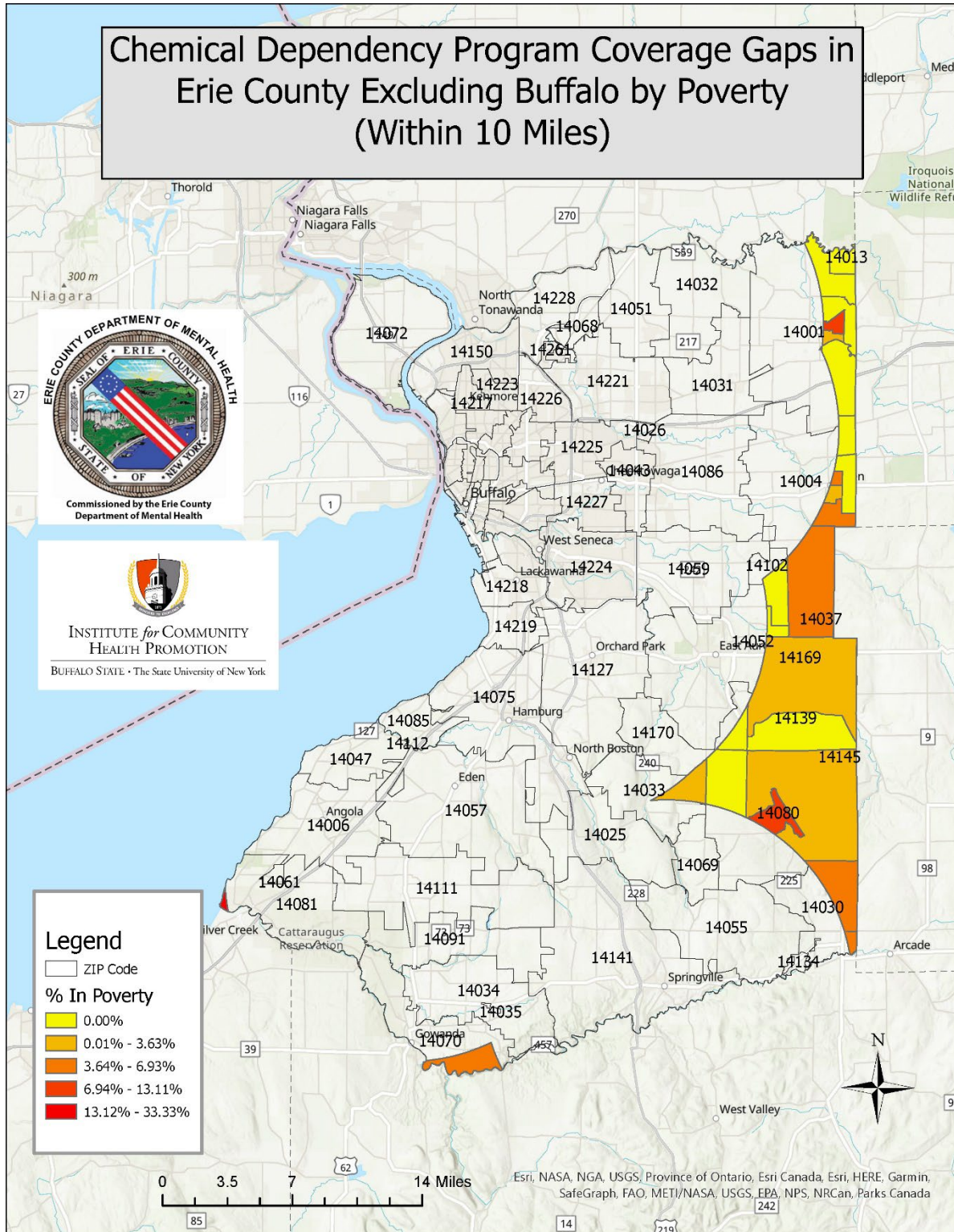


Figure 5.1

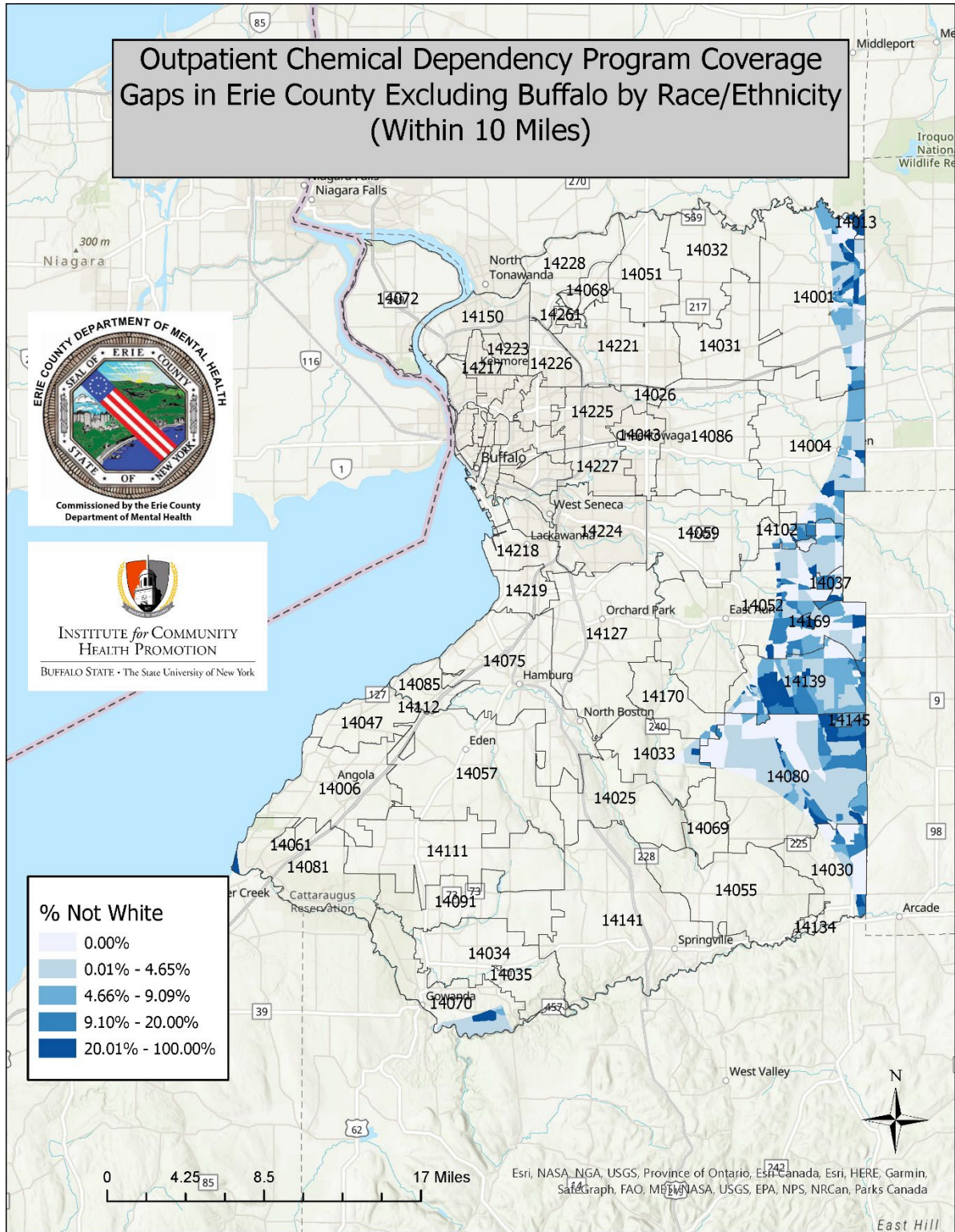


Figure 5.2

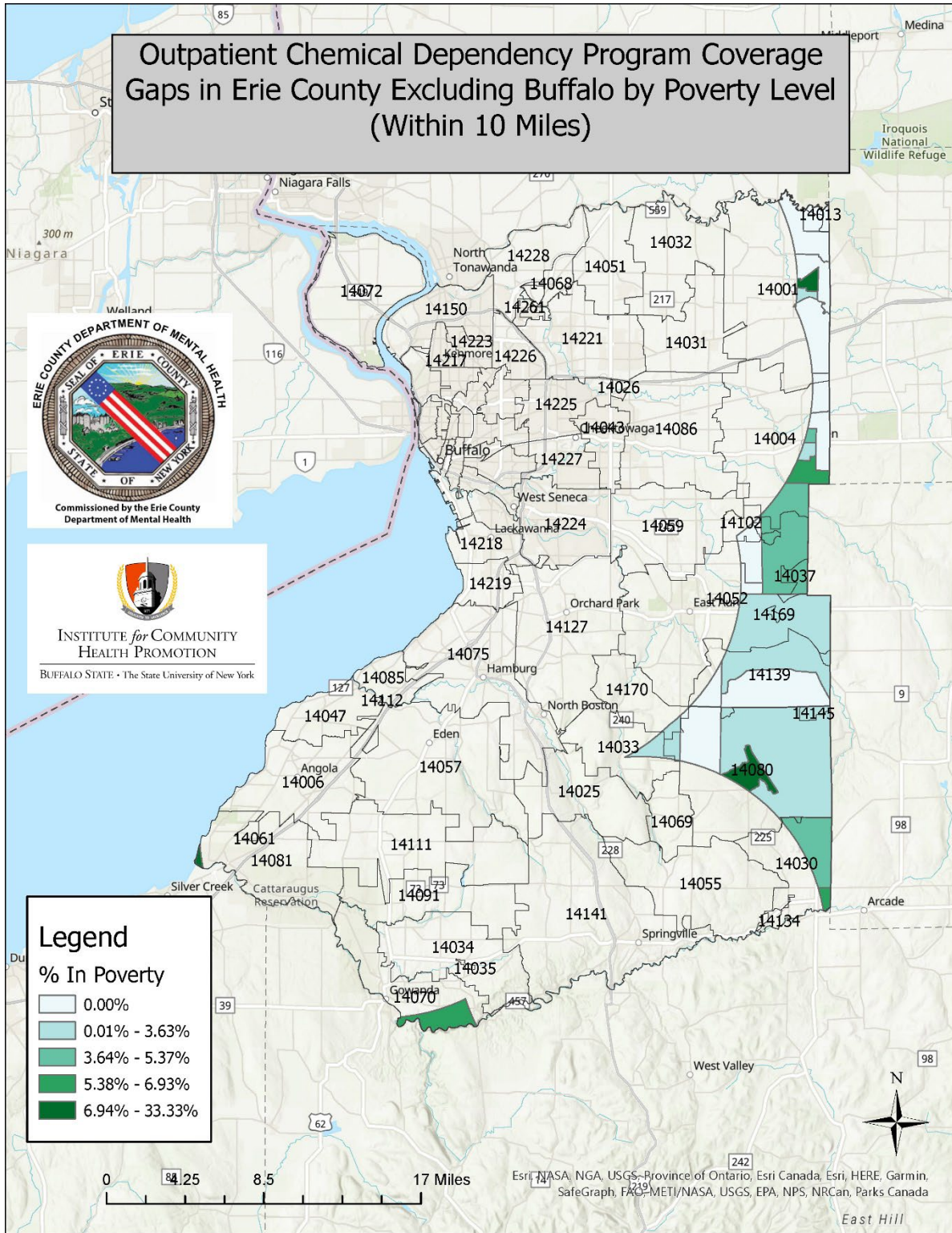
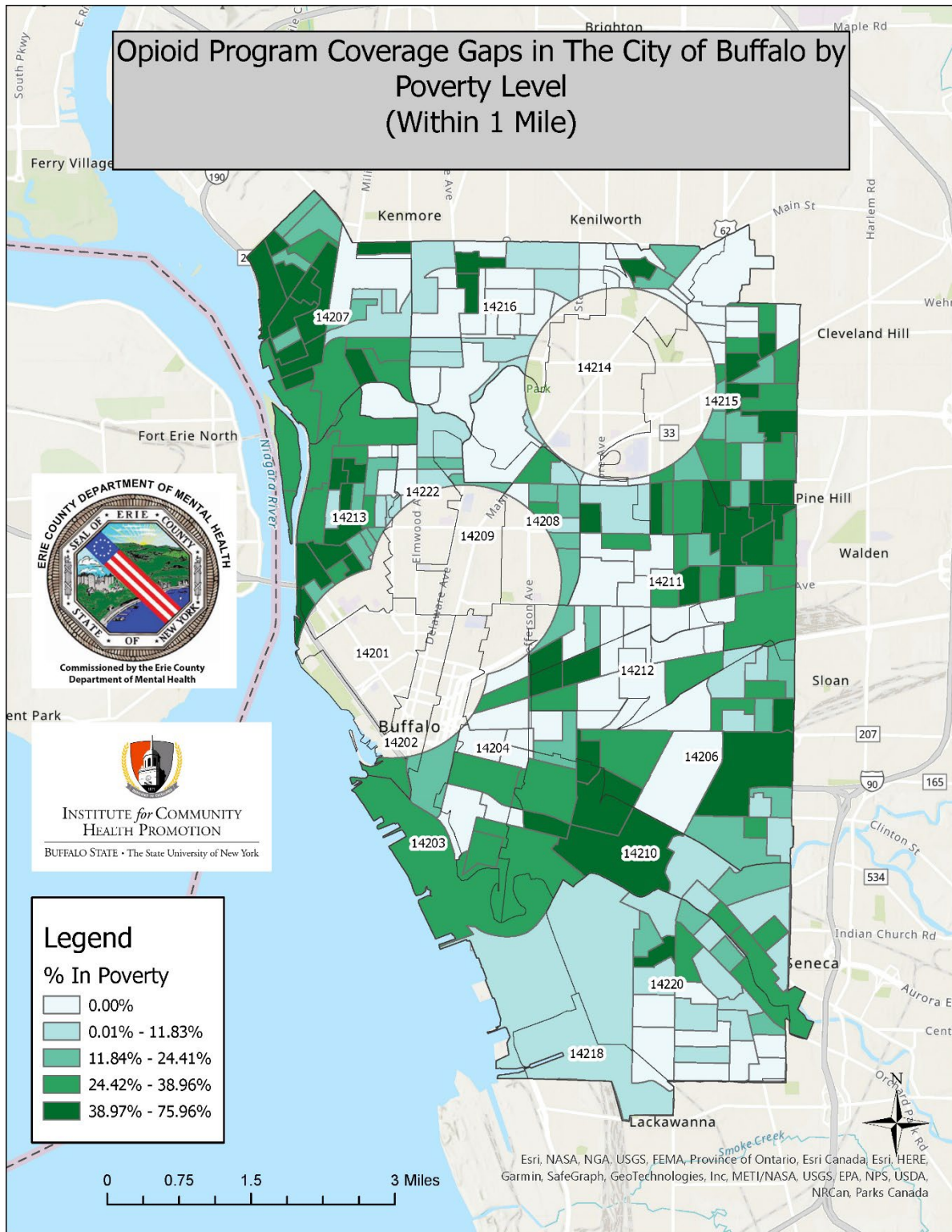


Figure 6.2



Tables of Demographic Characteristics of Populations with/Without Treatment Coverage

Table 1.1: Basic Demographic Profile for Populations in Chemical Dependency Program Coverage (All Types, Within 1 Mile, City of Buffalo Only)

	In Coverage	Not in Coverage
% Not White	69.13%	43.83%
% In Poverty	25.37%	18.58%
Total Population	185,857	99,756

Table 1.2: Chemical Dependency Program Coverage (All Types, Within 1 Mile, City of Buffalo Only):
Percent of Each Race/Ethnicity Category as a Proportion of the Total Population In Coverage and Not in Coverage. [Columns sum to 100%]

	In Coverage	Not in Coverage	Total City of Buffalo Only Proportions
% Hispanic	13.13%	11.76%	12.65%
% White	30.87%	56.17%	39.71%
% Black	42.96%	20.70%	35.19%
% American Indian or Alaska Native	0.44%	0.58%	0.49%
% Asian	8.31%	5.98%	7.50%
% Hawaiian Native or Pacific Islander	0.04%	0.03%	0.04%
% Other Races	0.50%	0.47%	0.49%
% Multiple Races	3.75%	4.31%	3.95%
Total	100%	100%	100%

Table 1.3: Chemical Dependency Program Coverage (All Types, Within 1 Mile, City of Buffalo Only):
 Percent of In Coverage and Not in Coverage Groups as a Proportion of the Total Population in Each
 Race/Ethnicity Category. [Rows sum to 100%]

	Percent Within Race/Ethnicity In Coverage	Percent Within Race/Ethnicity Not in Coverage	Total
% Hispanic	32.47%	67.53%	100%
% White	20.55%	79.45%	100%
% Black	41.37%	58.63%	100%
% American Indian or Alaska Native	27.86%	72.14%	100%
% Asian	30.00%	70.00%	100%
% Hawaiian Native or Pacific Islander	33.40%	66.60%	100%
% Other Races	38.19%	61.81%	100%
% Multiple Race	49.41%	50.59%	100%
Total Population	34.93%	65.07%	100%

Table 2.1: Basic Demographic Profile for Populations in Outpatient Chemical Dependency Program Coverage (Within 1 Mile, City of Buffalo Only).

	In Coverage	Not in Coverage
% Not White	60.81%	60.16%
% In Poverty	17.41%	22.26%
Total Population	58,881	226,732

Table 2.2: Outpatient Chemical Dependency Program Coverage (Within 1 Mile, City of Buffalo Only): Percent of Each Race/Ethnicity Category as a Proportion of the Total Population In Coverage and Not in Coverage. [Columns sum to 100%]

	In Coverage	Not in Coverage	Total City of Buffalo Only Proportions
% Hispanic	14.55%	12.15%	12.65%
% White	39.19%	39.84%	39.71%
% Black	36.74%	34.78%	35.19%
% American Indian or Alaska Native	0.42%	0.50%	0.49%
% Asian	5.04%	8.14%	7.50%
% Hawaiian Native or Pacific Islander	0.04%	0.04%	0.04%
% Other Races	0.52%	0.48%	0.49%
% Multiple Races	3.50%	4.06%	3.95%
Total	100%	100%	100%

Table 2.3: Outpatient Chemical Dependency Program Coverage (Within 1 Mile, City of Buffalo Only):
Percent of In Coverage and Not in Coverage Groups as a Proportion of the Total Population in Each Race/Ethnicity Category. [Rows sum to 100%]

	Percent Within Race/Ethnicity In Coverage	Percent Within Race/Ethnicity Not in Coverage	Total
% Hispanic	67.53%	32.47%	100%
% White	79.45%	20.55%	100%
% Black	58.63%	41.37%	100%
% American Indian or Alaska Native	72.14%	27.86%	100%
% Asian	70.00%	30.00%	100%
% Hawaiian Native or Pacific Islander	66.60%	33.40%	100%
% Other Races	61.81%	38.19%	100%
% Multiple Race	50.59%	49.41%	100%
Total Population	65.07%	34.93%	100%

Table 3.1: Basic Demographic Profile for Populations in Opioid Program Coverage (Within 1 Mile, City of Buffalo Only)

	In Coverage	Not in Coverage
% Not White	60.81%	60.16%
% In Poverty	17.41%	22.26%
Total Population	58,881	226,732

Table 3.2: Opioid Program Coverage (Within 1 Mile, City of Buffalo Only): Percent of Each Race/Ethnicity Category as a Proportion of the Total Population In Coverage and Not in Coverage.
[Columns sum to 100%]

	In Coverage	Not In Coverage	Total City of Buffalo Only Proportions
% Hispanic	14.55%	12.15%	12.65%
% White	39.19%	39.84%	39.71%
% Black	36.74%	34.78%	35.19%
% American Indian or Alaska Native	0.42%	0.50%	0.49%
% Asian	5.04%	8.14%	7.50%
% Hawaiian Native or Pacific Islander	0.04%	0.04%	0.04%
% Other Races	0.52%	0.48%	0.49%
% Multiple Races	3.50%	4.06%	3.95%
Total	100%	100%	100%

Table 3.3: Opioid Program Coverage (Within 1 Mile, City of Buffalo Only): Percent of In Coverage and Not in Coverage Groups as a Proportion of the Total Population in Each Race/Ethnicity Category. [Rows sum to 100%]

	Percent Within Race/Ethnicity In Coverage	Percent Within Race/Ethnicity Not in Coverage	Total
% Hispanic	76.28%	23.72%	100%
% White	78.47%	21.53%	100%
% Black	82.16%	17.84%	100%
% American Indian or Alaska Native	86.15%	13.85%	100%
% Asian	79.09%	20.91%	100%
% Hawaiian Native or Pacific Islander	78.21%	21.79%	100%
% Other Races	81.73%	18.27%	100%
% Multiple Races	79.65%	20.35%	100%
Total Population	79.38%	20.62%	100%

Table 4.1: Basic Demographic Profile for Populations in Chemical Dependency Program Coverage (All Types, Within 10 Miles, Erie County Excluding Buffalo)

	In Coverage	Not in Coverage
% Not White	16.25%	14.14%
% In Poverty	6.20%	4.71%
Total Population	685,284	1,407

Table 4.2: Chemical Dependency Program Coverage (All Types, Within 10 Miles, Erie County Excluding Buffalo): Percent of Each Race/Ethnicity Category as a Proportion of the Total Population In Coverage and Not in Coverage. [Columns sum to 100%]

	In Coverage	Not in Coverage	Total Erie County Excluding Buffalo Proportions
% Hispanic	3.68%	1.78%	3.68%
% White	83.75%	85.86%	83.75%
% Black	4.89%	0.64%	4.88%
% American Indian or Alaska Native	0.49%	7.32%	0.50%
% Asian	3.74%	0.36%	3.73%
% Hawaiian Native or Pacific Islander	0.01%	0.00%	0.01%
% Other Races	0.28%	0.43%	0.28%
% Multiple Races	3.16%	3.62%	3.16%
Total	100%	100%	100%

Table 4.3: Chemical Dependency Program Coverage (All Types, Within 10 Miles, Erie County Excluding Buffalo): Percent of In Coverage and Not in Coverage Groups as a Proportion of the Total Population in Each Race/Ethnicity Category. [Rows sum to 100%]

	Percent Within Race/Ethnicity In Coverage	Percent Within Race/Ethnicity Not in Coverage	Total
% Hispanic	99.80%	0.20%	100%
% White	99.90%	0.10%	100%
% Black	99.79%	0.21%	100%
% American Indian or Alaska Native	99.97%	0.03%	100%
% Asian	97.01%	2.99%	100%
% Hawaiian Native or Pacific Islander	99.98%	0.02%	100%
% Other Races	100.00%	0.00%	100%
% Multiple Races	99.69%	0.31%	100%
Total Population	99.77%	0.23%	100%

Table 5.1: Basic Demographic Profile for Populations in Outpatient Chemical Dependency Program Coverage (Within 10 Miles, Erie County Excluding Buffalo)

	In Coverage	Not in Coverage
% Not White	16.53%	6.45%
% In Poverty	6.20%	4.71%
Total Population	667,654	19,037

Table 5.2: Outpatient Chemical Dependency Program Coverage (Within 10 Miles, Erie County Excluding Buffalo): Percent of Each Race/Ethnicity Category as a Proportion of the Total Population In Coverage and Not in Coverage. [Columns sum to 100%]

	In Coverage	Not in Coverage	Total Erie County Excluding Buffalo Proportions
% Hispanic	3.75%	1.27%	3.68%
% White	83.47%	93.55%	83.75%
% Black	5.01%	0.36%	4.88%
% American Indian or Alaska Native	0.49%	1.05%	0.50%
% Asian	3.83%	0.32%	3.73%
% Hawaiian Native or Pacific Islander	0.01%	0.01%	0.01%
% Other Races	0.28%	0.19%	0.28%
% Multiple Races	3.16%	3.26%	3.16%
Total	100%	100%	100%

Table 5.3: Outpatient Chemical Dependency Program Coverage (Within 10 Miles, Erie County Excluding Buffalo): Percent of In Coverage and Not in Coverage Groups as a Proportion of the Total Population in Each Race/Ethnicity Category. [Rows sum to 100%]

	Percent Within Race/Ethnicity In Coverage	Percent Within Race/Ethnicity Not in Coverage	Total
% Hispanic	99.05%	0.95%	100%
% White	96.90%	3.10%	100%
% Black	99.80%	0.20%	100%
% American Indian or Alaska Native	94.19%	5.81%	100%
% Asian	99.76%	0.24%	100%
% Hawaiian Native or Pacific Islander	98.05%	1.05%	100%
% Other Races	98.08%	1.92%	100%
% Multiple Races	97.15%	2.85%	100%
Total Population	97.23%	2.77%	100%

Table 6.1: Basic Demographic Profile for Populations in Opioid Program Coverage (Within 10 Miles, Erie County Excluding Buffalo)

	In Coverage	Not in Coverage
% Not White	17.46%	9.94%
% In Poverty	6.50%	4.43%
Total Population	576,439	110,252

Table 6.2: Opioid Program Coverage (Within 10 Miles, Erie County Excluding Buffalo): Percent of Each Race/Ethnicity Category as a Proportion of the Total Population In Coverage and Not in Coverage.
[Columns sum to 100%]

	In Coverage	Not in Coverage	Total Erie County Excluding Buffalo Proportions
% Hispanic	3.93%	2.34%	3.68%
% White	82.54%	90.06%	83.75%
% Black	5.44%	1.95%	4.88%
% American Indian or Alaska Native	0.22%	1.95%	0.50%
% Asian	4.36%	0.47%	3.73%
% Hawaiian Native or Pacific Islander	0.01%	0.01%	0.01%
% Other Races	0.29%	0.21%	0.28%
% Multiple Races	3.19%	3.01%	3.16%
Total	100%	100%	100%

Table 6.3: Opioid Program Coverage (Within 10 Miles, Erie County Excluding Buffalo): Percent of In Coverage and Not in Coverage Groups as a Proportion of the Total Population in Each Race/Ethnicity Category. [Rows sum to 100%]

	Percent Within Race/Ethnicity In Coverage	Percent Within Race/Ethnicity Not in Coverage	Total
% Hispanic	89.77%	10.23%	100%
% White	82.73%	17.27%	100%
% Black	93.58%	6.42%	100%
% American Indian or Alaska Native	37.54%	62.46%	100%
% Asian	97.99%	2.01%	100%
% Hawaiian Native or Pacific Islander	87.37%	12.63%	100%
% Other Races	88.20%	11.80%	100%
% Multiple Races	84.74%	15.26%	100%
Total Population	83.94%	16.06%	100%

Chemical Dependency Racial Equity Analysis Results

The results of these analyses present evidence of differences in demographic characteristics for populations in the county that fall inside and outside of the catchment areas for treatment program locations. There are several limitations for these analyses, most notably that they do not reflect the availability of telehealth and remote service delivery, they are restricted to a Euclidean (straight-line) distance measure to capture the physical access to the system locations, and they do not reflect the variable levels of transportation and economic access to these resources for the populations throughout the county.

- City of Buffalo Program Coverage
 - All Programs (Figures 1.1, 1.2; Tables 1.1, 1.2, 1.3)
 - Notable gaps in coverage occur in North Buffalo, South Buffalo, parts of the East Side and Riverside
 - The gap on the East Side in ZIP codes 14211 and a portion of 14215 with high concentrations of minority populations not in coverage areas
 - These same locations exhibit high concentrations of populations in poverty
 - By examining the proportions of each race/ethnicity grouping within each In Coverage and Not in Coverage group we are able to assess the **relative** access (e.g. are Hispanics disproportionately represented in the Not in Coverage group compared to Whites).
 - Black populations make up 35.19% of the population with coverage while this group makes up 15.43% of the population not in coverage
 - Less than 30% of the population in the City of Buffalo area (62,331) is not in coverage of these services
 - Most other non-White demographic groups are similarly represented between the in and not in coverage groupings, including for poverty status where locations not in coverage have slightly lower rates of poverty
 - By examining the proportion within each race/ethnicity group between In Coverage and Not in Coverage groups, we are able to assess the **absolute** coverage of each demographic group (e.g. what proportion of Hispanics in Erie County are not in coverage).
 - Greater than 67% of each Non-White population group falls within program coverage
 - Outpatient Only (Figures 2.1, 2.2; Tables 2.1, 2.2, 2.3)
 - Similar to all program types, notable gaps in coverage occur in North Buffalo, South Buffalo, parts of the East Side and Riverside
 - These gaps highlight areas of the East Side in ZIP codes 14211, and 14215 with high concentrations of minority populations and high concentrations of populations in poverty with limited coverage
 - These areas are similar to all program types, however the areas not in coverage for outpatient programs cover a larger area of this neighborhood
 - By examining the proportions of each race/ethnicity grouping within each In Coverage and Not in Coverage group we are able to assess the **relative** coverage

- (e.g. are Hispanics disproportionately represented in the Not in Coverage group compared to Whites).
- Black populations make up nearly 40% (37.70%) of the population with coverage while this group makes up approximately 30% (31.55%) of the population not in coverage
 - Less than 41% of the population in the City of Buffalo area (116,788) is not in coverage to these services
 - Most other non-White demographic groups have lower levels of proportional representation in the not in coverage groupings with the exception of Multiple Races and poverty status where locations not in coverage have slightly higher rates
- By examining the proportion within each race/ethnicity group between In Coverage and Not in Coverage groups, we are able to assess the **absolute** coverage of each demographic group (e.g. what proportion of Hispanics in Erie County are not in coverage).
 - Greater than 55% of the population of each Non-White population group falls within program coverage
- Opioid Only (Figures 3.1, 3.2; Tables 3.1, 3.2, 3.3)
 - Unlike the distribution of all programs and outpatient program types, much of the City of Buffalo is without coverage for opioid treatment programs within 1 mile
 - Notable gaps in coverage occur on the West Side, Riverside, all of South Buffalo, and significant portions of the East Side
 - By examining the proportions of each race/ethnicity grouping within each In Coverage and Not in Coverage group we are able to assess the **relative** coverage (e.g. are Hispanics disproportionately represented in the Not in Coverage group compared to Whites).
 - Most non-White demographic groups have similar (or slightly lower) levels of proportional representation in the not in coverage groupings with the exception of Asian, American Indian, and Alaska Native, and Multiple Races groups where locations not in coverage have slightly higher rates
 - Nearly 80% of the population in the City of Buffalo area (226,732) are not in coverage to these services
 - By examining the proportion within each race/ethnicity group between In Coverage and Not in Coverage groups, we are able to assess the **absolute** coverage of each demographic group (e.g. what proportion of Hispanics in Erie County are not in coverage).
 - Less than 25% of the population of each Non-White population group falls within program coverage areas.
- Erie County Excluding Buffalo Program Coverage
 - All Programs (Figures 4.1, 4.2; Tables 4.1, 4.2, 4.3)
 - Notable gaps in coverage occur in a band across the eastern edge of the county as well as small pockets on the southern border near Irving and Gowanda

- These gaps highlight areas of the county that are largely rural though smaller populations centers within these areas, including Gowanda (14070) and Holland (14080) show some concentration of minority populations and those in poverty
 - By examining the proportions of each race/ethnicity grouping within each In Coverage and Not in Coverage group we are able to assess the **relative** coverage (e.g. are Hispanics disproportionately represented in the Not in Coverage group compared to Whites).
 - Nearly all racial and ethnic minority groups have proportionally better representation in the in-coverage group compared to the not in coverage group
 - One notable exception is the higher proportion of Native population (American Indian or Alaska Native by the Census definition) that are not in coverage compared to within
 - The overall proportion of the population not in coverage is exceedingly small (<2.5%, 1,407 people)
 - By examining the proportion within each race/ethnicity group between In Coverage and Not in Coverage groups, we are able to assess the **absolute** coverage of each demographic group (e.g. what proportion of Hispanics in Erie County are not in coverage).
 - Greater than 97% of each Non-White population group falls within program coverage
 - Outpatient Only (Figures 5.1, 5.2; Tables 5.1, 5.2, 5.3)
 - Overall, the coverage for outpatient chemical dependency treatment programs is very similar to that of all programs
 - Notable gaps in coverage occur in a band across the eastern edge of the county as well as small pockets on the southern border near Irving and Gowanda
 - These gaps highlight areas of the county that are largely rural though smaller populations centers within these areas, including Gowanda (14070) and Holland (14080) show some concentration of minority populations and those in poverty
 - By examining the proportions of each race/ethnicity grouping within each In Coverage and Not in Coverage group we are able to assess the **relative** coverage (e.g. are Hispanics disproportionately represented in the Not in Coverage group compared to Whites).
 - Nearly all racial and ethnic minority groups have proportionally better representation in the in-coverage group compared to the not in coverage group
 - One notable exception is the higher proportion of Native population (American Indian or Alaska Native by the Census definition) that are not in coverage compared to within
 - Additionally, populations not in coverage have higher rates of poverty status compared to those within coverage
 - The overall proportion of the population not in coverage is exceedingly small (<3%, 19,037 people)
 - By examining the proportion within each race/ethnicity group between In Coverage and Not in Coverage groups, we are able to assess the **absolute** coverage of each

demographic group (e.g. what proportion of Hispanics in Erie County are not in coverage).

- Greater than 94% of each Non-White population group falling within program coverage
- Opioid Only (Figures 6.1, 6.2; Tables 6.1, 6.2, 6.3)
 - Unlike the distribution of all programs and outpatient program types, there are substantial gaps in coverage for opioid treatment programs within 10 miles throughout much of the county outside of the first rings suburbs around the City of Buffalo
 - By examining the proportions of each race/ethnicity grouping within each In Coverage and Not in Coverage group we are able to assess the **relative** coverage (e.g. are Hispanics disproportionately represented in the Not in Coverage group compared to Whites).
 - Most non-White demographic groups have similar (or lower) levels of proportional representation in the not in coverage groupings with the exception of the American Indian and Alaska Native group where locations not in coverage have much higher rates of representation
 - Populations not in coverage from opioid treatment programs have substantially higher rates of poverty compared to those in coverage
 - By examining the proportion within each race/ethnicity group between In Coverage and Not in Coverage groups, we are able to assess the **absolute** coverage of each demographic group (e.g. what proportion of Hispanics in Erie County are not in coverage).
 - Less than 20% of the population of each Non-White population group falling outside of program coverage areas
 - However, the American Indian and Alaska Native group is disproportionately not in coverage of these programs, with greater than 62% of the population of this group falling outside of program coverage areas.